



Gilboa Historical Society

Learning, sharing and preserving our history.

Spring 2018

Gilboa Historical Society
PO Box 52
Gilboa, NY 12076

Officers

President- Kristen Wyckoff
VP- Linda Newerla
Secretary- Janette Reynolds
Recording Secretary- Carolyn Brown

Treasurer- Wilma Jones

Board of Directors- Christl Riedman, Kristen Wyckoff, Lee Hudson, Linda Karlsen, Val Riedman and Connie Ruehle.

Gilboa Museum Chair

Kristen Wyckoff
kristen.wyckoff@yahoo.com
607-588-9413

Gilboa Town Historian

Janette Reynolds
janreyS1@yahoo.com

GHS Meetings – Third Wednesday of the month at the Gilboa Town Hall 7PM
March thru December

The Gilboa Museum is located at 122 Stryker Rd. The Museum phone number is 607-588-6894. The Museum is open every Saturday and Sunday from May 26 to October 7 from 12 -4:30pm.

Newsletter Editor- Karen Cuccinello karenc@midtel.net

Presidents Report By Kristen Wyckoff

Spring is upon us and summer is right ahead! As I write, spring has taken a long time to get to Gilboa New York, but I have a feeling that once it gets here it's going to come with a bang. I know that our plans for Gilboa Museum & Juried History Center are coming with a bang, too. We have so many exciting events planned – guest speakers, ice-cream social, quilt exhibit, and much more.

First I am pleased to announce that we are extending our week ends this year from Memorial weekend (Saturday May26th) to Columbus Day weekend (October 7th.) We have decided to hire some extra tour guides which has been made possible because of the Juried Foundation. Thank you again Nick Juried for all your monetary and moral support.

The Gilboa Fest is on Sunday July 8th this summer. Put it on your calendar now and you will have a splendid day at the museum, checking out the quilts we have, enjoying all the vendors, music and food. Bring the children, the grandchildren and the college age young adults. Digging for fossils and minerals seems to draw all ages. Making corn husk dolls, fossil rubbings, and checking out all our fish and bottle brush tree fossils under the magnifier is great fun for all ages, too. Gilboa Gifts will be ready for you with beautiful fossil jewelry, unique Gilboa gifts, local books and Gilboa stationary for all occasions. Come and sit on our porch, hang out in the pavilion, and enjoy the day!

We are hosting a special fund raising event “Paint Out” on Saturday August 18th. This is sponsored by the Windham Arts Alliance, Greene County Council on the Arts, Schoharie County Council on the Arts and MURAL in Delaware County. Between these organizations we are recognizing artists in all three counties - Delaware, Greene and Schoharie. The “Paint Out” will bring artists from this tri-county area to paint our local scenery and then auction off their pieces at a festive reception in our Fossil Pavilion at the Gilboa Museum complex. I want to recognize Linda Karlsen from GHS, Carolyn Bennett from the Zadock Pratt Museum, and Sheila

and Paul Trautman from the Greene County Council of the Arts for creating and organizing this wonderful event. We hope to see you at the auction to bid on these one-of-a-kind creations as a way to support art and history in our communities. The “Paint Out” will benefit the artists and those art organizations and support Catskill Tri-County Historical Views, a new regional publication published by the Gilboa Museum and Juried History Center.

The Gilboa Historical Society is the lead organization for the Tri-County Historical Views that is being shaped by over 24 outstanding local historian’s from the counties of Delaware, Greene, and Schoharie. It is edited by GHS member, Lee Hudson. As members of the GHS you will be getting the first year’s issues in May and November as a member benefit. In later years, as a member you will be eligible for a subscription at half price.

As the president, I cannot be more proud to represent this great inspiration for all of us to jump start history in our own back yards and networking all three counties together!

I myself have had the chance to educate several school groups this spring. The 9th grade Earth Science class and 4th graders from Milford Central School visited the museum in April. The Earth Science and Environment Science classes from South Kortright Central School visited in May. I also instructed a teacher’s workshop with 73 teachers from several counties all focusing on climate change. The Devonian Period had a major climate change 380 million years ago, so it was an interesting highlight for their field trip day. A group of 60 fourth graders from Berne-Knox Central School are coming in June! I love sharing our intriguing story of the fossils; how they were found and the more recent fossil discoveries in the last decade and their new hypothesis; along with Old Gilboa’s memories and photos. I feel we have so much to share with people of all ages.

Thank you all for supporting our group and museum complex.

CATSKILL TRI-COUNTY HISTORICAL VIEWS

DELAWARE, GREENE, SCHOHARIE, NY

GILBOA MUSEUM & JURIED HISTORY CENTER

Vol. 1 No. 1 - SPRING 2018

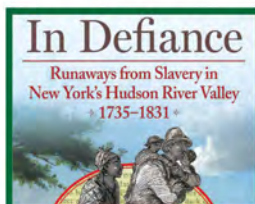
ARTICLES



ROOSTER TAILS



MUSEUM NOTES



BOOK REVIEWS

CATSKILL TRI-COUNTY HISTORICAL VIEWS IS OUT!

Gilboa Museum & Juried History Center Publishes Tri-County History

The Gilboa Museum & Juried Center made history on May 21 with the publication of a new regional Catskill history magazine. GHS members will be receiving their copy soon.

In August 2017, GHS Board approved the publication project, *Catskill Tri-County Historical Review Delaware, Greene, Schoharie, NY*. Soon after in October, local history leaders and writers from the three counties met at the Juried History Center in the Gilboa Museum to plan the new biannual publication featuring local Catskills' natural and cultural history. Besides articles by new and established writers, the publication includes Museum Notes, Book Reviews, and Rooster Tails—a section where an author adds or corrects previously published material. Originally designed for 72 pages, the publication quickly grew to 80 pages due to the overwhelming response of contributors. Catskill Tri-County was launched with encouragement and seed funding from Nick Juried of Gilboa and Texas, whose extraordinary legacy grants to the Gilboa Museum & Juried History Center are well known to GHS members. The publication is also supported by local businesses, non-profits and individuals. Going forward, it will be largely subscription-based.

Participants of the October 2017 meeting.



Back row L-R - Steve Hoare, Karen Cuccinello (slightly hidden), Terry Bradshaw, Kevin Berner, Robert Titus, Larry Tompkins, John Duda, Ted Shuart, Kristen Wyckoff, Bill Birns, Lee Hudson. Second row - Dave Dorpfeld on left, Johanna Titus, Carolyn Bennett, Beatrice Mattice (in center). Seated - Ellen Thorn, Suzanne Walsh, Janette Reynolds, Sylvia Van Houten, and Cyndi LaPierre. Not pictured are: Mike Kudish, John Ham, and Gabrielle Pierce.

The May issue of *Catskill Tri-County Historical Views* salutes all Tri-County historical societies and offers their members half-price subscriptions. Like GHS, these societies interpret and preserve records essential to the collective memory of towns or villages, enriching community and place for locals and

new residents.

Gilboa Historical Society members will receive the first two issues of *Tri-County* in May and November free-of-charge as a membership benefit thanks to a generous grant from the Juried Family Foundation.

Catskill Tri-County is possible because of the long-standing work of many local historians: County editors are: Dave Dorpfeld, Greene Historian, Ted Shuart, Schoharie Historian, and Gabrielle Pierce, Delaware Historian. Contributing editors from Delaware: Bill Birns, President, John Burroughs Woodchuck Lodge; John Duda, Trustee, Fleischmanns Museum of Memories and Skene Memorial Library; Mike Kudish, forest and railroad historian; from Greene, Carolyn Bennett, Director, Zadock Pratt Museum and Prattsville Town Historian, John Ham, railroad historian, Cyndi LaPierre, President, Mountaintop Historical Society, Robert and Johanna Titus, science professors and geological historians; from Schoharie, Terry Bradshaw, historian and biographer, Karen Cuccinello, genealogist, historian, journalist and Town of Summit Historian, Beatrice Mattice, author of the classic *They Walked These Hills Before Me* and Town of Conesville historian for over 40 years, and Sylvia Van Houten, original Board member for the Iroquois Indian Museum and the Library Committee for Old Stone Fort. Rounding out the staff are Copy Editor GHS member Ellen Thorn, former managing editor, Oxford University Press, Photo Editor Larry Tompkins, author and board member, Windham Historical Society; Museum Notes editors, Suzanne M. Walsh, art historian and Asst. Director, Zadock Pratt Museum and Kristen Wyckoff, President, GHS and Chair, Gilboa Museum Complex; and Book Review Editors, Steve Hoare Editor, Publisher Black Dome Press, Wray and Loni Rominger, Publishers of Purple Mountain Press, Gerry Stoner, GHS member, Publisher of Stonecrest Industries. Providing assistance is GHS member, Gilboa Town Historian Janette Reynolds. Serving as editor is GHS member Lee Hudson, former director of public education programs following a career in higher education. *Tri-County* promotes an understanding and awareness of the Catskill region's natural historical and cultural importance. The publication supports local history writers, historical institutions, historical societies, and the preservation of historical sites and materials. Interested writers should visit CatskillTriCounty.org or [CatskillTriCounty](#) on Facebook.

Quilt Show at Gilboa Museum by Marianne Neuber

This season you are invited to explore the rich diversity of Patchwork and Quilting.

This unique American folk art has been an important part of our cultural heritage since the first settlers arrived in the New World, seeking to piece together a new life for themselves.

Compare the exquisite traditional quilts with the stunning examples of patchwork artistry. The first half of the Quilt show from Memorial week end to August 5th will exhibit more contemporary quilts made by local artists. The second half of the Quilt show will be Vintage Quilts made here in Gilboa; some going back to the original village. Many members of our historical society have graciously loaned their family quilts to the Museum from August 11th through Columbus Day week end in October.

Please come see these beautiful quilts throughout our Museum season.



The Bald Eagles of Gilboa by Kristen Wyckoff

It is now a common site to see Bald Eagles in our area.

We are proud to announce that we have four Bald Eagle nests in the town of Gilboa! Two nests are on the Schoharie Reservoir, one is near Nickerson Park on the Schoharie Creek, and one is in Mayham Pond on the very southern tip of Gilboa. The Department of Conservation (DEC) will actually climb up into the nests to count and tag the fledglings. It's too early now to know how many we have in 2018. Two of the nests can be seen from a main road. The one that can be seen from the Gilboa Bridge on 990V is on New York City property and cannot be visited. It is a fairly new nest and the couple chose this location after the reconstruction of the dam had started! It doesn't seem to bother them at all. The fishing is great just below the dam which helps the eagles to provide for their young. I do wonder how long this nest will be there, though. The tree is on a slope that is eroding away; and many of the trees have fallen down. I try not to worry about the fledgling's having that happen while they are so young. It is nice that two nests are on DEP property and well protected. The one on Mayham Pond is very visible from Rte. 23 if you park along the road in front of Albano's farm. Just remember to keep your distance. There is a fine involved if anyone gets too close to a Bald Eagle nest during nesting season. The nest is active this year, but it is in a dead white pine tree. I am surprised they have built their nest in a dead tree. I do not think this nest will be there for long because of that.

Many eagles do not survive for long due to ingesting lead bullets when eating road kill. They also ingest lead from fishing sinkers. Many get hit by vehicles along the road while eating roadkill, too. We want to keep our Bald Eagle off the endangered species list forever; so please switch all your bullets, fishing sinkers, and lures to lead free and be mindful when you are driving in the Catskills!

Photo of eagles by Mike Clark of NYS DEC.



Reservoir Milestone

New York — The New York City Department of Environmental Protection (DEP) reached a landmark recently when a micro-tunneling machine broke through a wall of rock and completed the first leg of a new release tunnel at Schoharie Reservoir. The “holing through” happened April 23 at 9:02 p.m. It marked end of tunneling for the 930-foot land leg of the tunnel. Engineers will now focus on building the 1,188-foot water leg of the tunnel, which will extend from a shaft near Route 990V in Gilboa, N.Y., and come up through the bottom of the reservoir.

The milestone is part of a \$142 million project to build release works at the reservoir. The new tunnel is expected to be complete in about three years. It will give DEP the ability to release water downstream of the reservoir into Schoharie Creek to facilitate dam maintenance, respond to potential emergencies, mitigate flood risk for downstream communities, and enhance downstream habitat for fish and wildlife. “The projects happening now at Schoharie Reservoir are meant to ensure our critical infrastructure at this location continues to deliver water while protecting public health and safety for decades to come,” DEP Commissioner Vincent Sapienza said. “I want to congratulate our crew in Gilboa for completing the first leg of the release tunnel. Holing through on any tunnel is an important landmark that deserves all our recognition and appreciation for the workers who achieved it.”

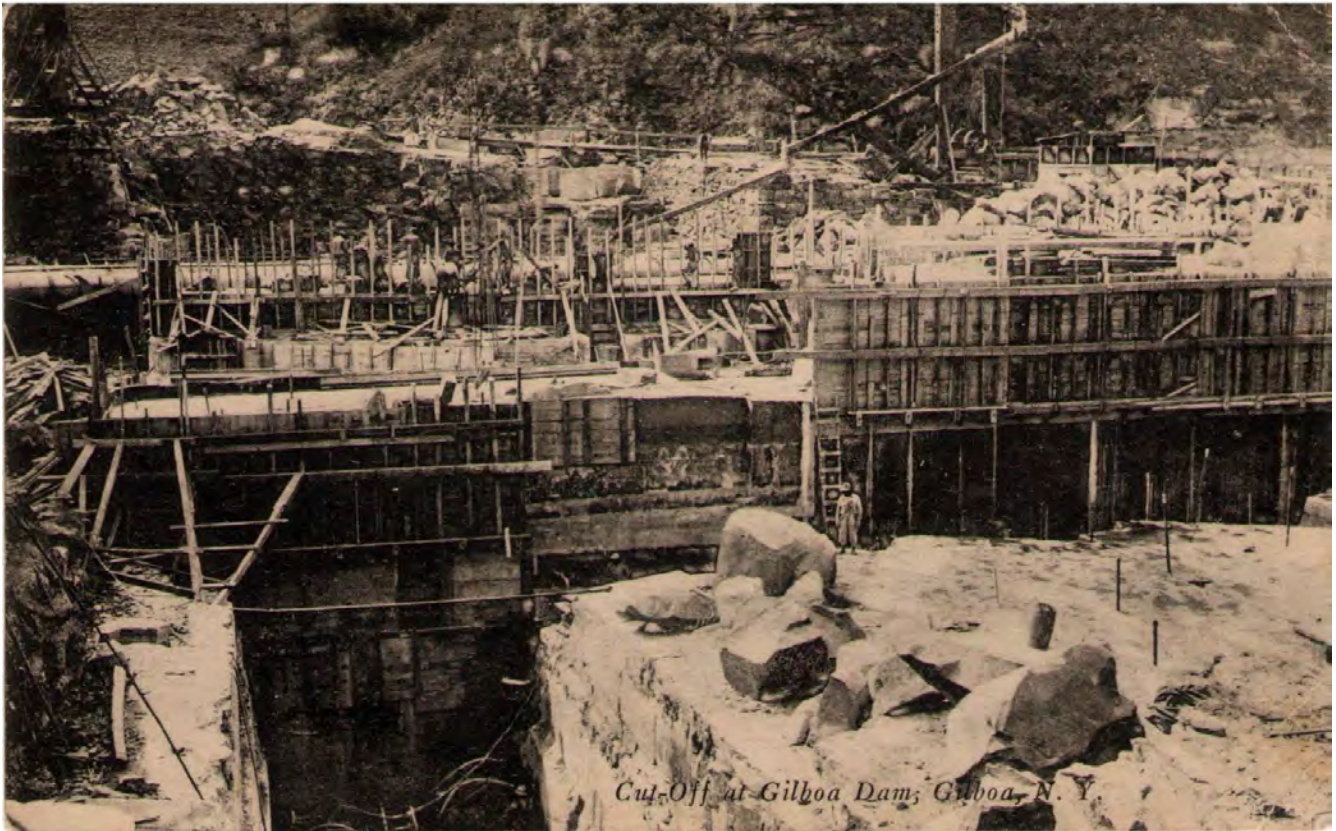
The release works are one component of a larger \$400 million program that has strengthened infrastructure and will improve operational flexibility at Schoharie Reservoir, which annually supplies about 15 percent of New York City’s drinking water. The program began with the full-scale rehabilitation of the 155-foot tall Gilboa Dam, a \$138 million project that finished in 2014. It will also include upgrades to the Shandaken Tunnel Intake Chamber and site restoration work. DEP implemented the program of repairs and upgrades at Schoharie Reservoir more than a decade ago to achieve modern safety standards at Gilboa Dam.

DEP began construction of the new release works at Schoharie Reservoir in July 2015. Thus far, the city has made substantial progress on excavations for an intake at the bottom of the reservoir and a release outlet near the creek. Work crews also completed the construction of a 182-foot-deep gate shaft that served as the starting point for tunneling. The 9.5-foot-diameter micro-tunneling machine began its work last October. It is an unmanned machine that is operated by remote control from the surface, where operators track its progress and performance by watching it on monitors inside a control room. Workers only entered the tunnel when the machine needed maintenance.

The machine will drive two tunnel sections that total 2,118 feet, running as deep as 185 feet below the surface. The recently completed land leg of the tunnel stretched 1,188 feet from the gate shaft to a valve chamber on the eastern bank of Schoharie Creek. The valve chamber is located about 1,000 feet downstream of Gilboa Dam. A second leg of the tunnel — set to begin construction soon — will run 930 feet from the gate shaft to the intake structure at the bottom of Schoharie Reservoir, several hundred feet south of the dam. Once workers bore into the bottom of the reservoir, a specialized dive team will remove the micro-tunneling machine from the 135-foot-deep water and install the remaining parts of the intake structure.

The valve chamber — which acts as the portal that releases water into the creek — will include two valves capable of releasing about 65-1,550 million gallons of water each day. A third, smaller valve will be capable of smaller releases up to 65 million gallons per day.

Gilboa Dam was built from 1919 to 1927 and impounds Schoharie Reservoir, the northernmost reservoir in the city’s water supply system. Schoharie Reservoir can store up to 19.6 billion gallons of water, and it accounts for nearly 15 percent of the drinking water delivered to New York City each day. Schoharie Reservoir collects water from a 314-square-mile watershed. It diverts that water through the 18-mile Shandaken Tunnel, which discharges into the Esopus Creek where it travels another 11 miles before entering Ashokan Reservoir. From Ashokan Reservoir, the water flows south through the 92-mile-long Catskill Aqueduct to New York City. *This article is from <https://cseengineermag.com>*



Overview of Events by Linda Karlson

We start the season with the museum opening May 26th and running until October 7th. After visiting our quilt exhibits, we encourage you to visit the quilt shows at Lansing Manor and the Pratt Museum.

July 8th will be our Gilboafest 2 which should be bigger than last year. Mike Hermann will be singing for us again and many of the vendors from last year will be returning, along with some new ones. There will be wine tasting, vintage cars, bake sale and raffles. The museum will be open during Gilboafest.

The Hot Pots, who were a huge success last year, will be entertaining everyone at our August 15th Ice Cream Social.

If you would like to donate anything for our October 7th Auction please contact me at 518-827-5578. We are looking into having a pot luck supper in November. December will be our busy month with all of our Christmas events.

Please remember to check out the Gilboa Historical Society's Facebook page for all the details. Remember to "Join" the group so that the GHS activities post on your page. For more information our websites are gilboahome.com and gilboafossils.org.



2018 GHS Events and Guest Speakers

MAY 26th - OCTOBER 7th - QUILT SHOW at Museum Complex

JUNE 20th - Regular meeting at the Town Hall Gilboa 7pm. Guest Speaker - Historical Metal Detecting-Chris Altmann. He will be visiting the Wyckoff Farms and the Stryker/Morkaut Farms for interesting local material before the evening event.

JULY 8th – GILBOA FEST 2018- Vendors, Music by Mike Hermann , Quilt Exhibit, Children's Activities.

JULY 18th- Field Trip to a farm in Richmondville - Meet at Town Hall at 6:15pm to car pool.

AUGUST 15th - Ice-Cream Social and the Hot Pots at the Pavilion starts at 6pm.

AUGUST 18th – Paint Out & Auction at Pavilion- Tri-County Publication Celebration/Fund raiser.

SEPTEMBER 19TH- Guest speaker to be announced

OCTOBER 7th - GHS Auction at the pavilion

OCTOBER 17th- Regular Meeting at the town hall 7pm- Guest Speaker-Francis Driscoll-Greene County Landscape Photographer

NOVEMBER 14th (2nd Wednesday!) - Regular Meeting at Town Hall 7pm – Program- Monarch Butterflies and their Migration routes

DECEMBER 2nd - Christmas Boutique at Museum

DECEMBER 14th - 16th - Christmas Collections Exhibit

If anyone has ideas for potential speakers please bring their name to a meeting or contact Kristen Wyckoff.



The outside wall of the museum is adorned with beautiful engraved plaques honoring those who have supported the building of the Nicholas J. Juried History Center. If you would like to purchase a plaque for the Heritage Families, Memorials, Sponsor/Business please select the option that is best for you below.

HERITAGE FAMILIES

\$100 \$250 \$500 \$750 \$1,000 \$

Are you descended from one of Gilboa's founding families who lived in the town from the 1700s to 1925? This plaque will recognize families from Gilboa's earliest history and honor your family's heritage.

FAMILY NAME

DONOR NAME(S)

MEMORIALS

\$50 \$100 \$

This plaque will celebrate "The Memory of" an individual you name.

ENTER NAMES: In Memory of

by

SPONSORS



\$50 \$100 \$200 \$.....

This plaque will acknowledge your generosity as a supporter of the Gilboa History Center.

NAME

YOU CAN DIRECT YOUR GIFT TO (CIRCLE CHOICE): EXHIBITS, GENEALOGY, EVENTS, PRESERVATION OF MATERIALS, OR YOUTH AND SCHOOL ACTIVITIES.

BUSINESS SUPPORTERS

\$100 \$250 \$500 \$1,000 \$.....

This plaque will serve as a tribute to businesses who contribute money or services.

BUSINESS NAME

Your name, address, and membership status appears on the label of the physical *Quarterly*: a * next to your name indicates a paid-up individual membership; likewise, ** indicates a paid-up couple's membership, and *** indicates a paid-up family. A single dagger † indicates lifetime membership and a double ‡ indicates a couple's lifetime membership. Please consider joining if you are not a member, and let us know if we have incorrect address information.

Membership Application Form	
Name: _____	() Lifetime membership (\$100.00) \$ _____
Subscription format: Physical <input type="checkbox"/> Electronic <input type="checkbox"/> Both <input type="checkbox"/>	() Family membership (\$25.00) \$ _____
Email: _____	() Couples membership (\$15.00) \$ _____
Address:* _____	() Individual membership (\$10.00) \$ _____
_____	() Senior or student membership (\$7.00) \$ _____
City: _____	() Scholarship fund \$ _____
State: _____ Zip: _____ Phone: _____	() Gilboa Historical Society <i>Quarterly</i> \$ _____
* Please provide any temporary address for our seasonal mailings.	() Gilboa History Center Building Fund \$ _____
Seasonal address for mailings: Spring <input type="checkbox"/> Summer <input type="checkbox"/> Fall <input type="checkbox"/> Winter <input type="checkbox"/>	() Gilboa History Center Display Fund \$ _____
Address: _____	() Gilboa History Center Genealogy Area \$ _____
City: _____	() General fund \$ _____
State: _____ Zip: _____ Phone: _____	() Memorial gifts† \$ _____
	_____ \$ _____
	Total amount enclosed \$ _____
	† The Board has a "wish list" of memorial gifts; please inquire of a board member, and provide the complete wording of the dedication, your name and address, and the name and address of a next-of-kin to be notified.
Gilboa Historical Society, Post Office Box 52, Gilboa, NY 12076	

Gilboa Historical Society
PO Box 52
Gilboa, NY 12076

U.S. Postage Paid
Permit Number 9
Gilboa Historical Society
P.O. Box 52
Gilboa, NY 12076