



# Gilboa Historical Society Newsletter

*Learning, sharing, and preserving our history*

June 2021

Volume 23, Issue 1

Gilboa Historical Society  
PO Box 52  
Gilboa, NY 12076

## Board of Directors

President: Gerry Stoner

[gerrys@genericcomp.com](mailto:gerrys@genericcomp.com)

Vice President: Kristen Wyckoff

[kristen.wyckoff@yahoo.com](mailto:kristen.wyckoff@yahoo.com)

Treasurer: Linda Stratigos

[lindastratigos@gmail.com](mailto:lindastratigos@gmail.com)

Secretary: Janette Reynolds

[janette\\_reynolds@yahoo.com](mailto:janette_reynolds@yahoo.com)

Recording Secretary: Carolyn Brown

[paandga@midtel.net](mailto:paandga@midtel.net)

Lee Hudson [hudsonlee2@aol.com](mailto:hudsonlee2@aol.com)

Linda Karlsen [cholepj4@aol.com](mailto:cholepj4@aol.com)

Christl Riedman [chrisriedman@catskill.net](mailto:chrisriedman@catskill.net)

Val Riedman [valriedman@catskill.net](mailto:valriedman@catskill.net)

Connie Ruehle [sophier14@catskill.net](mailto:sophier14@catskill.net)

Museum Acting Director:

Nelta Miller 607 588-7323

Gilboa Town Historian:

Janette Reynolds [JanRey51@yahoo.com](mailto:JanRey51@yahoo.com)

Gilboa Historical Society meetings are on the third Wednesday of each month. The next meeting will be our annual meeting on July 21, at the Gilboa Museum, located at 122 Stryker Road, Gilboa NY 12076.

The Gilboa Museum is open every Saturday and Sunday through Columbus Day weekend, from 12 to 4:30.

Private tours of the Museum at other times are encouraged by calling 607 652-2665, 607 588-9413, or 607 588-6267.

Newsletter Editor: Terry Bradshaw

## Online Gilboa Historical Society

[facebook.com/groups/gilboahistoricalociety](https://facebook.com/groups/gilboahistoricalociety)

[GilboaHistoricalSociety.com](http://GilboaHistoricalSociety.com)

[GilboaFossils.org](http://GilboaFossils.org)

Please share these addresses with others.

Copyright © 2021, all rights reserved

## Letter from the President

Gerry Stoner

I want to thank Kristen Wyckoff for her years of service as a charter member of the Gilboa Historical Society, chair of the museum committee, director of the Gilboa Museum, and president of the Gilboa Historical Society.

She has been inundated with family health issues and resigned from the presidency at the April 7, 2021, board meeting. She is now serving as vice president to assure a smooth transition, will remain on the board, and will work on the Natural Science areas in the museum.

Thank you, Kristen, for all you have done over the years.

The last nine months of 2020 were as atypical for the Historical Society as they were for America and the world. But just like the world, life at GHS went on from the confines of our home.

Linda Stratigos continued organizing our financial affairs, keeping up on all taxes and legal requirements of our 501(c)(3). As a result, we started 2021 with a clean bill of financial health. Thanks!

Linda Karlsen was also busy at home working with her psychic investigation team analyzing the spiritual life in the artifacts and the buildings of the Gilboa Museum. According to Tri-City NY Paranormal, there is definitely something there. Linda had to cancel our annual Psychic Fair, but led a spectacularly successful fundraiser with a gift basket lottery and membership drive in November. Again, thank you!"

The Gift Shop underwent renovations in 2020, and Christl Riedman and Nelta Miller used the fall to stock the shelves while Nelta and her consultant Lou Mercurio were setting up online sales and marketing (<https://www.gilboafossils.org/store-home/>). Overall, the Gift Shop went from the 1930s era to the 2020s aura!

Speaking of renovations, Kristen has been updating the Natural Science website (<https://www.gilboafossils.org/>) while also reworking the display of the 2005 Conesville discovery of the full-length *Eospermatopteris* fossil. This fossil's crown was new to the literature and caused quite a stir in the scientific community.

Through a visit of Bernard Means of Virginia Commonwealth University to the New York State Museum, there had been a 3D scan of that fossil; and the Gilboa Museum in conjunction with both the NYSM and VCU will be able to include a 3D print in our display—the first such artifact in the world! Thanks to Kristen, Lisa, Bernard, and 3D technology so we can see this!

Lee Hudson kept in direct contact with dozens of people to meet the publishing deadlines of *Catskill Tri-County Historical*

Letter from the President continued on page 2

**Letter from the President continued from page 1**

*Views* while the lockdown continued—while also having major reconstruction at home for relocating her mother to Gilboa. That might be considered a high-stress time, but Lee was able to accomplish that, attend board meetings, and is also planning an expansion of the Gilboa Village area in the Museum in her spare time)! Wow!

The board as a board has been great, and we are now looking forward with optimism for the 2021 season and beyond. It is great to actually see people!

**Looking Forward:**

- The museum is open weekends through Columbus Day (right now, we request a maximum of 10 people, wearing masks, and observing social distance with strangers).
- You can arrange special tours at other times by calling (607) 652-2665, (607) 437-7132, or (607) 588-6267.
- Our first meeting—and our annual meeting—will be on July 21, 2021, at 6:30 in the Dorothy Cox Juried Pavilion. It will start with a half-hour business meeting—check in, have an election for 4 seats on our Board of Directors, and close the meeting so we can hear great in-person music from Tom and Geri White.

## Facility Maintenance Endowment

The board wants to create an endowment plan to underwrite future costs of building-and-grounds maintenance of the society's complex.

A simplified example of the need: we will probably have to repaint the museum every six years and the expense for each painting might be around \$6,000. It is a stretch of the imagination that we will have an extra \$6,000 in 2028 or that we will have the discipline to squirrel away \$1,000 every year between now and then.

But, we could raise funds with matching grants, invest the proceeds, and have a system where we would be able to pay maintenance costs while protecting the principle.

The National Council of Nonprofits reports “Creating an endowment may be an important strategy to set aside funds for the future, and can be a hallmark of financial sustainability.” It goes on to state that endowments are not necessarily for every nonprofit, and that endowments should be carefully planned.

**Endowment for Facility Maintenance Committee**

We will form a committee of GHS members to report by the end of 2021 on the feasibility of creating an endowment.

This is a *planning* committee—we are *not* asking you to fix, pay, or guarantee anything. However, we need your experience in any one of three critical areas:

- to identify major maintenance tasks, their timing, and

## GHS Committees

Society committees are always evolving, with members volunteering in one area or dropping out of another. Our committee list is at [gilboahistoricalsociety.com](http://gilboahistoricalsociety.com), Who We Are.

The impetus for joining a committee may be avocational—you may want to interact with people in the Gift Shop, help create a diorama or a display in the museum, or help organize the society's archives.

On the other hand, motivation might be to use vocational skills developed over a career. Though we're small, our society needs the same skills as any other business.

You can explore your options with existing committees by contacting the committee chair. What happens when we don't have a committee that directly appeals to you? For instance, we might not have an advertising or promotions committee (although we probably should)!

Please, send me—or any board member—a note and we will bring it up at the very next board meeting. Make sure you make the suggestion and also tell us about your background in such an area!

Gerry Stoner, [gerrys@genericcomp.com](mailto:gerrys@genericcomp.com), 607 652-2665

probable costs. The goal is to generate a budget for all major maintenance issues over a 10-year period.

- to propose investment, risk, and financial planning and controls. The goal is to define a way to pay regular (mostly fixed) expenses separate from our variable, uncertain income flow.
- to provide distinction between the endowment and the general operations of the Society, and thus insure the integrity of the endowment.

If you have experience or a strong interest in any of these areas and would like to work on this committee with a 12/31/2021 end date, please let us know. We need your input, and all three areas are of critical importance to the future of the Society.

Gerry Stoner, [gerrys@genericcomp.com](mailto:gerrys@genericcomp.com), 607 652-2665

2020 taught us that a postal address is not infallible.

Phones (cell or landlines) are essential to correct an illegible postal or email address;

Email is great for upcoming events or disseminating immediate information; and

Our Postal Service is wonderful for general distribution of newsletter-type communications.

Please share these alternatives if you have them. We will protect and not misuse them!

## Gilboa Historical Society Press

Gerry Stoner

Traditional publishing required major investment to cover one-time costs before the first book could be produced. This had high risk and was not cost-effective for printing fewer than 1,000 copies.

With the development of desktop publishing and on-demand printing, short-run publishing in markets like local history is a reality. Such a book can be easily advertised, receive pre-publication commitments for purchase, and have books delivered quickly.

The Gilboa Historical Society is starting such a press, and our first publication will be William Stein, Linda Van Aller Hernick, and Frank Mannolini: *The Catskill Fossil Forest: A Guide to the Storied History of the Devonian Gilboa Forest and More Recent Discoveries*.

**Stein, Hernick, and Mannolini: *The Catskill Fossil Forest***

Goldring's 1925 display of the Gilboa Fossils was a smash hit, and it wasn't taken down until the museum was moved to the State Capital complex in 1976. A 51-year run!



Goldring's reconstruction at the NYSM stood for so long foremost because it was a first-class presentation. Her scientific ideas stood where they were, largely because the Gilboa fossils presented such a great mystery. Resolution of the mystery took time because the science of paleontology needed to mature in order to catch up with it. Perhaps much mystery still remains.

Stein's *The Catskill Fossil Forest* relates a coherent story, from 385-million years ago to 1915 Gilboa as a scene for Goldring's work; to the new science created as a result of her insights leading to the 2005 discovery at Conesville, the mapping and other reporting done at the Riverside Quarry in subsequent years; and finally going to a related path in Cairo.

Because of this still-developing situation, the authors will be revising and updating their report through summer, the content to be finalized in September, and the book being available in October 2021. This publication will be the most coherent and up-to-date volume with a complete set of graphics in full color.

## GHS's Annual Meeting

The Society's 2021 annual meeting—our first meeting of general membership—will be on Wednesday, July 21, in the Dorothy Cox Juried Pavilion starting at 6:30.

There will be refreshments, entertainment, and limited seating within the Pavilion, so please bring lawn chairs if you want to sit around the grounds.

This is an important meeting: the first half-hour will be a business meeting to elect four society members to two-year terms as members of the Board of Directors. We are currently soliciting candidates for this election, and will be distributing bios and ballots when you arrive and check in. You can then fill out the ballots, cast them at the entertainment intermission around 7:45, and we'll have results by 8:30.

So please, come out on the 3rd Wednesday in July, take care of society business, and then settle in for enjoyable music from Middleburgh's Tom and Geri White.

They both have lead voices, but they also can use them with close harmonies as well. Tom is a virtuoso on a number of instruments, and the play list includes a wide range of Appalachian and Celtic music.

## The Board of Directors

The board of directors is responsible to oversee all GHS business and activities.

Earlier, we asked members to consider volunteering for committees based on their own interest or skills. To a certain extent, a potential director should think along a similar path for the betterment of the organization.

While sensitive to a society's mission, a director should also have an interest or skill in a broad area of the society's operations (publicity, maintenance, accounting, public relations, technology, etc.).

We would like you to consider running as a possible candidate for the board of the Gilboa Historical Society.

The ballot is open for any current member who can commit to attending the monthly meetings. After the results become final, the board will determine the time and date for meetings in the 2021–2022 session.

To get on the ballot, you should write a brief bio of why you should serve as a director of the Gilboa Historical Society and the area(s) where you feel you could contribute (finance, marketing, customer service, communication, leadership, planning, and networking, etc.)

We will make up a roster of all candidate's bios, and a ballot to be filled out by members at the annual meeting.

Gerry Stoner, [gerrys@genericcomp.com](mailto:gerrys@genericcomp.com), 607 652-2665



## *Catskill Tri-County Historical Views Begins 4th Year*

Lee Hudson

Just in time to plan for the 5th Annual Catskill Conquest Rally, antique auto enthusiasts and readers of the Spring issue of *Historical Views* will learn the fascinating history behind the Rally organized each year by Robert Selkowitz. Commemorating (not reenacting) the 1903 Automobile Endurance Run, the Catskill Rally assembles old and newer cars to drive the historic route through our area.

Selkowitz's essay is one of many delightful submissions in the latest issue marking the publication's 4th year.

We have come quite a way since Honorary Editor Nick Juried provided seed funding for a three-county outreach and the publication's first issue. Since then, we have raised the funds for each issue from subscriptions, sponsors, and donors while operating as a not-for-profit program of GHS, published by the Gilboa Museum and Nicholas J. Juried History Center. As you can imagine, Nick is one of our closest readers and continues to be there for us. He recently generously offered additional funding for any publication-related project we came up with! So, if any of our members have ideas, please email me <hudsonlee2@aol.com>.

Allow me to single out the extraordinary contributions of GHS members Ellen Thorn and Carolyn Bennett who help in so many capacities that keep this publication going—from editorial guidance, copyediting, to marketing, and distribution. As you can see from page 4 in every issue, with contributors from the three counties, we have quite a team, but it is Carolyn and Ellen who help with our authors and bridge all the gaps throughout the publishing process.

Earlier this month our "A" team mailers—Carolyn, Ellen, Gerry Stoner, Linda Karlsen, and Suzanne Walsh—prepared the Spring issue of *Historical Views* for mailing to subscribers and you, the members of GHS. From its beginning, a subscription to the publication has been included with the benefits of GHS membership. Similar support was endorsed by the Pratt Museum Board for its members. And, to support and encourage membership, we offer a reduced subscription rate to members of all our local historical societies and appointed town or village historians.

We are always eager for submissions so consider writing an essay, commenting on or adding to someone else's in the Rooster Tails section, suggesting or reviewing a recent book. The submission guidelines can be found at <catskilltricity.org> or drop me a line with the topic you are considering.

As publisher of *Historical Views*, GHS is proud to contribute to the reach of local history and learning more about our area. Gilboa and Schoharie's history is often interwoven with those of the neighboring counties of Delaware and Greene. And, as you see in this issue's article "Fight for a New County" by former Greene County Historian David Dorpfeld just how close our past has come together with multiple legislative efforts between 1841–1849 to form a new county that would have included a newly formed (1848) Gilboa township. Along with nine other towns from Delaware, Schoharie and Greene, Gilboa was nearly moved out of Schoharie and into a new Harrison County with Prattsville as the county seat!

See you at the auto rally!



The 1903 route crossed the Susquehanna River. By then, 10 inches of rain had fallen, the flooding was historic, bridges were washed away, and roads submerged. Cars needed horses to get them through. Entrants were nicknamed "Mud Larks." Photo, C. H. Phelps of Sidney, New York.

## From Our Archives

At the start of the 1933–1934 school year, the Gilboa-Conesville Central Rural School published a Second Annual Announcement about the virtues and structure of the central school concept.

According to the title page, the school’s Board of Education consisted of President Avery Hinman, Leland Lewis, Philip Clapper, Walter Vrooman, and Cecil Cammer; the school’s administration was Clerk Franklin D. Hess, Treasurer Morris Faulkner, Superintendent Orlando J. Ives, Supervising Principal V. B. Peckham, Attendance Officer Edward Ryder, and Janitor John Davis.

### Faculty

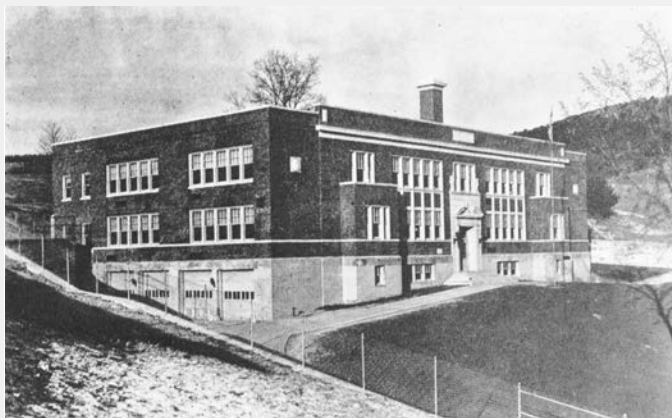
V. B. Peckham, Supervising Principal, Syracuse University and Teachers’ College, Columbia University  
 Winthrop Ames, Vice-Principal, Science and Agriculture, Massachusetts State College  
 Edith MacLenithen, History and Drawing, New York State Teachers’ College  
 Wealtha Godfrey, French and Latin, New York State Teachers’ College  
 Frances Drinnon, Commerce, New York State Teachers’ College  
 Margaret Ames, English and Library, Keuka College  
 Arline Hill, Mathematics, Elmira College  
 Dorothy Lutz, Cornell University, Homemaking  
 Lorna Oakes, Music, Potsdam Normal  
 Everett Hubbard, Physical Education, Cortland  
 Myrtle Wright, 7th and 8th Grades, Oneonta Normal  
 Grace Armstrong, 6th Grade, Oneonta Normal  
 Bertha Hubbard, 5th Grade, Oneonta Normal  
 Doris Whipple, 3d and 4th Grades, Oneonta Normal  
 Madelyn Blakesley, 2d Grade, Oneonta Normal  
 Mildred Faulkner, 1st Grade, Oneonta Normal

### District Schools

Beatrice Case, Conesville, Oneonta Normal  
 Belle Moore, Owlsville, Training Class  
 Myrtle E. Hall, Manorkill, Sub-Academic  
 Helen D. Wyckoff, Hauverville, Rural Renewable

### School Calendar for 1933-1934

September 5— School Opens.  
 September 19— Cobleskill Fair.



Gilboa-Conesville Central School

September 20— Teachers’ Conference.  
 October 12— Columbus Day.  
 October 19-20— State Teachers’ Conference at Troy.  
 November 30-December 1— Thanksgiving Recess.  
 December 22— Christmas Vacation begins 4:00 p.m.  
 January 3, 1933— School Reopens.  
 January 22-26— Regents Examinations.  
 January 25-26— Grade Examinations.  
 February 12— Lincoln’s Birthday.  
 March 29— Easter Vacation begins 4:00 p.m.  
 April 9— School Reopens.  
 May 30— Memorial Day.  
 June 14-15— Grade Examinations.  
 June 18-22— Regents Examinations.

### Commencement Activities

June 22— Grade Commencement.  
 June 24— Baccalaureate.  
 June 25— Class Night.  
 June 26— Commencement.  
 June 27— Junior Prom.

### Number of School Days

During Month of		Legal Holidays
September	17	
October	19	Columbus Day
November	21	Thanksgiving Day
December	16	
January	21	
February	19	Lincoln’s Birthday
March	21	
April	16	
May	22	Memorial Day
June	16	
Total	188	4
Teachers’ Conferences		3
		195

### Purpose

The purpose of this announcement is to acquaint pupils and patrons of this school with the organization and advantages offered by the Gilboa-Conesville Central School. The Board of Education has put forth every effort to see that the pupils of this school may have adequate and

proper equipment, a well trained faculty and courses of study sufficiently varied to meet the needs of all students.

**Building**

The Gilboa-Conesville Central School Building is located on a small hill on the east side of the Schoharie Reservoir, more commonly called the Gilboa Dam. The view of the water and of the foothills of the Catskills is unusually picturesque. The building is of modern fire proof construction, being made chiefly of concrete, brick, tile and mastic. There are six grade rooms, laboratory, combination study hall and library, commerce room, three recitation rooms, teachers' room, principal's office, combination auditorium and gymnasium, cafeteria, homemaking room, shop, showers for both boys and girls, bus room and boiler room. Each room is properly equipped with furniture and apparatus in order that children may learn.

Adjacent to the building is a ten-acre playground. It contains swings, slides, teeters, etc., for the younger children and a full size baseball diamond as well as plenty of free space for other games.

**Textbooks**

The school furnishes Free Textbooks to all students in both the grades and high school. These books are the property of the school and are loaned to the pupils while they are in attendance at the school. They are to be cared for properly and returned to the school when the pupil leaves school or at the close of school in June.

**Wardrobes and Lockers**

Each grade room is equipped with a built-in wardrobe so that pupils may leave their clothing and lunches in their own rooms under the supervision of the teacher. For older pupils there are lockers in the corridor alcoves. Keys are loaned to the students on payment of a small deposit. This deposit is returned at the close of school when the key is returned.

**Transportation**

This school has an unusual problem of transportation in that practically all children are carried to and from school by bus. Last year only three children lived within walking distance of the school. The equipment consists of six busses carrying from 30 to 65 children, owned by the school, and of cars and horse drawn vehicles owned by the drivers which are used on the routes which are inaccessible by bus. In the four years that this system has been operated there have been no serious accidents or collisions in spite of the fact that the winters in this section of the state are quite severe. The routes for 1933-1934 are as follows:

<i>Route</i>	<i>Bus</i>	<i>Driver</i>
Manorkill No. 1	65 pass. G. M. C.	Otis Wright
Manorkill No. 2	30 pass. Brockway	Paul Stryker
Broome Center	53 pass. G. M. C.	Edlas Fancher
Roe District	30 pass. Brockway	Merle Hubbard

Blenheim	53 pass. G. M. C.	Charles Case
Red Falls-Prattsville	60 pass. Brockway	Peter Carr

*Supplementary Routes*

Gallo	Imer Conro
Bear Kill	Harold Brand
Hilliker	Chauncey Ballard
Blakeslee	Charles Case
South Mountain	Raymond Collins

The men who drive these conveyances have been chosen by the Board of Education because of their ability as capable, careful drivers to whom they feel that the safety of their children and yours may be trusted.

**Change in Grade**

In June 1933, the Regents of the University of the State of New York raised the rating of the Gilboa-Conesville Central School from middle grade three years to High School grade. This advance in grade was made after the recommendation of the representative of the Education Department, who inspected the school in May, and was unusual in that it was the second raise in grade given to this school in the academic year 1932-1933. This distinction is evidence of fine type of work which has been done at the Gilboa school during the past years.

**Course of Study**

The school offers courses leading to the following diplomas: College Entrance, Commercial, Vocational Agriculture, Vocational Homemaking, and Regents Academic. These courses allow each student to choose the one which most interests him and which will best fit him for the vocation he wishes to pursue. Further than this, it is possible for a student to earn an Academic Diploma by offering a three year sequence in French, Latin, Mathematics, Science, or History. This means that the student is given an opportunity to concentrate on those subjects which appeal to him most without the necessity of having to spend as much time on the other subjects as was formerly necessary.

**Suggested Programs**

The following programs are laid out to assist the student in choosing his course. Each student should decide as early as possible after he enters High School which course he wishes to take and then should lay out his schedule for each year so that he may meet the requirements of that particular course.

**Requirements for a College Entrance Diploma**

1st Year	2d Year	3d Year	4th Year
English I	English II	English III	English IV
Gen. Science	French II or	History A or B	Am. History
French I or	Latin II	French III or	Int. Algebra
Latin I	Pl. Geometry	Latin III	Physics or
El. Algebra	Civics	1 unit elective	Chemistry
	½ unit elective		½ unit elective

Candidates are advised to take three years of one foreign language and two years of another. However, if they wish to go to college they should decide on the college they will attend, and meet the special entrance requirements of that college. Earning a College Entrance Diploma does not guarantee that the candidate will be accepted for entrance in any particular college.



GHS annual membership status is based on an anniversary date. For a new annual membership, your 12 months will start when we process your check; for a renewal, your 12 months will be added to your current expiration date. This change guarantees you a full year of member benefits—2 complimentary issues of *Catskill Tri-County Historical Views*, all mailings of the GHS *Newsletter*, and gift shop discounts for the full twelve months.

**Membership Application — Gilboa Historical Society, Post Office Box 52, Gilboa, NY 12076**

**Primary address**

Name \_\_\_\_\_  
 Address \_\_\_\_\_  
 City \_\_\_\_\_  
 State \_\_\_ Zip \_\_\_\_\_ Phone \_\_\_\_\_  
 Email \_\_\_\_\_  
 Email \_\_\_\_\_  
 Cell Phone \_\_\_\_\_ Cell Phone \_\_\_\_\_

Lifetime membership \$200 \$ \_\_\_\_\_  
 Family membership \$30 \$ \_\_\_\_\_  
 Couple membership \$20 \$ \_\_\_\_\_  
 Individual membership \$15 \$ \_\_\_\_\_  
 Senior/Student \$10 \$ \_\_\_\_\_  
 Endowment for the future\* \$ \_\_\_\_\_  
 Current operations\* \$ \_\_\_\_\_  
 Tri-County Historical Views\* \$ \_\_\_\_\_  
 Designated contributions\* \$ \_\_\_\_\_  
 Memorial gifts\* \$ \_\_\_\_\_  
 Total amount enclosed \$ \_\_\_\_\_

**Secondary address**

GHS can file a secondary mailing address that you can activate it by phone (607.652.2665) or email (gerrys@genericcomp.com). With this, you can change your mailing address for a few weeks or several months, and for this year only or for years to come.

Name \_\_\_\_\_  
 Address \_\_\_\_\_  
 City \_\_\_\_\_  
 State \_\_\_ Zip \_\_\_\_\_ Phone \_\_\_\_\_

\*Please tell us about your donation—how you would like it used, wording for a memorial gift, contact info for interested parties, an endowment's target, etc.

Facebook: facebook.com/groups/gilboahistoricalsociety/  
 Publications, podcasts, photos, and public documents:  
 GilboaHistoricalSociety.com  
 The story of Gilboa Fossils: GilboaFossils.org

**Requirements for a Regents Academic Diploma**

Where candidates offer three years of a *foreign language*:

1st Year	2d Year	3d Year	4th Year
English I	English II	English III	English IV
Latin I or	Civics	History A or B	Am. History
French I	Latin II or	Latin III or	2 units elective
Gen. Science	French II	French III	
1 unit elective	1 ½ uts. elective	1 unit elective	

Candidates must offer either two units of Mathematics or two units of Science for this diploma.

Where candidates offer a sequence in *mathematics*:

1st Year	2d Year	3d Year	4th Year
English I	English II	English III	English IV
El. Algebra	Pl. Geometry	History A or B	Am. History
Gen. Science	Civics	Int. Algebra	Chemistry or
1 unit elective	1 ½ uts. elective	Solid Geometry	Physics
		Adv. Algebra	1 unit elective
		1 unit elective	

Where candidates offer a sequence in *science*:

1st Year	2d Year	3d Year	4th Year
English I	English II	English III	English IV
Gen. Science	Civics	History A or B	Am. History
El. Algebra	Pl. Geometry	Chemistry	Physics
1 unit elective	1 ½ uts. elective	1 unit elective	1 unit elective

Where candidates offer a sequence in *history*:

1st Year	2d Year	3d Year	4th Year
English I	English II	English III	English IV
El. Algebra	Pl. Geometry	History B	Am. History
Gen. Science	History A	2 units elective	Chemistry or
1 unit elective	Civics		Physics
	½ unit elective		1 unit elective

**Requirements for a Commercial Diploma**

1st Year	2d Year	3d Year	4th Year
English I	English II	English III	Bus. English
Int. to Business	Bus. Arithmetic	History A or B	Am. History
Gen. Science	Typewriting I	Bookkeeping I	Bookkeeping II
1 unit elective	Civics	1 unit elective	Business Law
	1 unit elective		½ unit elective

**Requirements for a Vocational Diploma**

1st Year	2d Year	3d Year	4th Year
English I	English II	English III	English IV
Gen. Science	Civics	History A or B	Am. History
Agric. I or	Agric. II or	Agric. III or	Agric. IV or
Homemaking A	Homemaking B	Homemaking C	Homemaking D
1 unit elective	1 unit elective	1 unit elective	1 unit elective

Candidates must offer either two units of mathematics or two units of science.

**Electives**

1st Year	2d Year	3d Year	4th Year
French I	French II	French III	Physics
Latin I	Latin II	Latin III	Bookkeeping II
Int. to Business	Com. Arith.	Harmony I	Solid Geometry
El. Design	Rudiments of	Chemistry	Adv. Algebra
El. Rep.	Music	Int. Algebra	History B
El. Alg.	Pl. Geometry	Bookkeeping	Agric. IV
Agric. I	Typewriting I	History A	Homemaking D
Homemaking A	Ec. Geography	Agric. III	
	Agric. II	Homemaking C	
	Homemaking B		

[Ed: Thelma Serrie said students often were needed to work on the farm and took postgraduate courses at the high school until they could resume their college education.]



Gilboa Historical Society  
Post Office Box 52  
Gilboa, NY 12076-0052

U.S. Postage Paid  
Permit Number 9  
Gilboa Historical Society  
P.O. Box 52  
Gilboa, NY 12076-0052

Change Service Requested

**Continued from page 7**

### **Extra-Curricular**

In addition to the more formal requirements for the various diplomas, the school offers a program of physical education, music, athletics, dramatics, orchestra, chorus, public speaking, and writing. Mr. Hubbard, who had charge of our athletics last year, will be with us again and with the material which will be available this year we expect to have some fine teams to represent our school. Miss Oakes, well known in the community for her musical ability, will have charge of the work in band, chorus and orchestra. There will be opportunity for students to take part in plays and assembly programs and to thus receive training in acting and public speaking. *The Reflector*, Senior Yearbook, will give an opportunity to those interested in literary and journalistic pursuits.

### **Non-Residents**

We expect to have with us again this year the 7th and 8th Grade and High School students from Ashland, Prattsville and five surrounding districts and from the two districts in Blenheim. The school officials hope that they will make their attendance at the Gilboa school profitable for both themselves and the school.

### **Reports**

Report cards will be given out at the end of each five week period during the school year. Parents are requested to look these reports over carefully and then to sign and return them to the school. In case of an unsatisfactory report, parents are requested to discuss the matter with their children and also to consult with the teachers and principal. Only by wholehearted cooperation between the school and the home can the best results be attained.

### **Attendance**

All students are expected to attend school regularly and promptly. The only legal excuses are "sickness of pupil" or "sickness in the family" or in a few instances "impassable roads." "Sickness in the family" is not a valid excuse for more than two days and in the case of "sickness of the pupil" the school may require a doctor's certificate should it seem advisable. As a student's work is affected by irregular attendance, each parent should see that his children are not absent unless it is absolutely necessary. Also, the amount of money which the district receives from the state is dependant on the number of pupils in average daily attendance. Regular attendance not only gives the student a better opportunity to do his work but assists the district financially.